



B.M. MACCHINE UTENSILI s.r.l.

Via Edmondo De Amicis, 146 - 10093 Collegno (TO) - ITALY

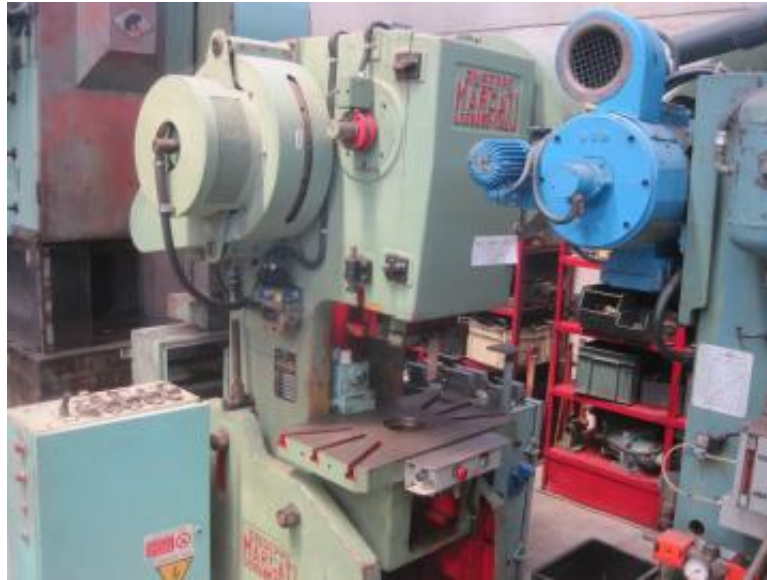
Tel: (0039) 011-403.11.24 / 011-403.15.79 - Fax: (0039) 011 403.13.28

www.bmtorino.it - bm@bmtorino.it

IT 07417070013

G. MARCATI GML 35 IR

Code 3862



MECHANICAL PRESS

PRENSA MECANICA

C-Frame press	Type	Tipo	Prensa cuello de cisne
Pressure	35		Tn. maquina
Table	750 x 400 mm		Mesa
Ram travel	70 mm		Recorrido carnero
Strokes por minute	60		Golpes al minuto
Max. distance between table/ram	320 mm		Abertura max.
Power	2,2 Kw		Potencia
Overall dimensions	1400 x 1200 x 2100 mm		Dimensiones
Serial number	008581		Matricula
Inclinable	Notes	Notas	Inclinable

The characteristics, data, measurements and photos provided here are not binding
 Características, datos, medidas y fotos no suponen compromiso ninguno